



DNA from Saliva

EASY • PAINLESS • PROVEN

Collect superior samples for your genetic analysis

Are you looking for a non-invasive way to collect DNA from patients that cannot or choose not to comply with blood collections? DNA Genotek has developed a product for collecting high quantity and high quality DNA from saliva using absorbent sponges. This method is an all-in-one system for the collection, stabilization and transportation of DNA from saliva.

- **Easy collection, transportation and processing**
- **Painless, non-invasive collection of high quality, high quantity DNA**
- **DNA is stable for years at room temperature**
- **Proven on downstream applications**
- **Standardized format for automated processing**

Oragene·DISCOVER is superior to buccal swabs

- Higher DNA yield and quality
- More reliable for downstream applications, including complex arrays
- Lower bacterial content
- Sample is stabilized for long-term storage at room temperature



Sample ready for transport, storage and processing

Collection device catalog #: OGR-575

For more information contact info@dnagenotek.com

For Research Use Only
Not for use in diagnostic procedures

For assisted collection of human DNA

DNA Genotek Inc.
2 Beaverbrook Road
Ottawa, ON, Canada K2K 1L1
Subsidiary of OraSure Technologies, Inc.

Toll-free (North America): 1.866.813.6354
Tel.: 613.723.5757 • Fax: 613.723.5057
www.dnagenotek.com
info@dnagenotek.com

DNAgenotek



www.dnagenotek.com

Benefits

- Non-invasive, reliable collection that increases compliance and decreases costs
- Eliminate phlebotomy costs and requirement for a clinic/hospital setting
- DNA from saliva is equivalent to DNA from blood for downstream applications
- Ideal for use with children or donors that are not able to spit
- Sample remains stable for years at room temperature, reducing transportation and storage costs
- Sample can be mailed using the standard postal system
- Increase efficiency, minimize sample handling and reduce handling errors with a compatible format for high-throughput processing

Collection method comparison

Attributes	Blood collection		Oral collection	
	Venous blood	Mouthwash	Buccal swabs	Oragene-DISCOVER (OGR-575)
Non-invasive collection	✗	✗	✓	✓
Specimen stability at room temperature	Days	Weeks	Days	Years
Low bacterial content	✓	✗ [†] (up to 60% bacterial content)	✗ [†] (up to 90% bacterial content)	✓ (median 6.8% bacterial content)
Median DNA yield	30 µg	35 µg	2 µg	17.3 µg [‡]
Sample size	1 mL	10 mL ^{**}	1 swab	0.75 mL
Molecular weight	> 23 kb	> 23 kb	< 23 kb	> 23 kb [‡]
Shipping at ambient temperature	✗	✓	✓	✓
Ideal for non-compliant donors	✗	✗	✗	✓

[†] Birnboim, H.C., Iwasiwo, R.M. and James, C.M.P. (2008). Human genomic DNA content of saliva samples collected with the Oragene self-collection kit. DNA Genotek. PD-WP-011.

[‡] Niles, J.O., Rabuka, S., and Iwasiwo, R.M. (2010). Non-invasive, assisted collection of high quantity and quality genomic DNA from saliva of young children. DNA Genotek. PD-WP-018.

^{**} Volume of mouthwash used for sample collection.

Kit contents



Oragene®-DISCOVER is for research use only, not for use in diagnostic procedures. Some DNA Genotek products may not be available in all geographic regions.

*Oragene is a registered trademark of DNA Genotek Inc. All other brands and names contained herein are the property of their respective owners.

Product specifications

Pre-use with packaging:

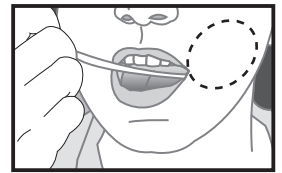
Dimensions: 14.0 x 8.0 x 2.8 cm
 Sample volume: 0.75 mL using enclosed sponges
 Weight: 39 g
 Shelf-life: 30 months

Post sample collection specifications

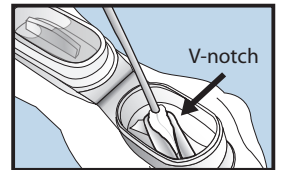
Standard false bottom tube:

Tube diameter: 16 mm
 Tube height (without cap): 93 mm
 Sample stability: Years

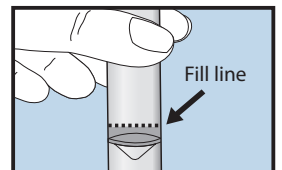
Easy collection



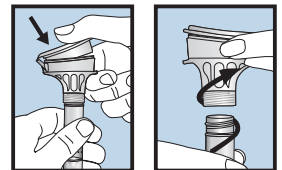
Place and move sponge in cheek pouch along the gums and inner cheeks to soak up as much saliva as possible.



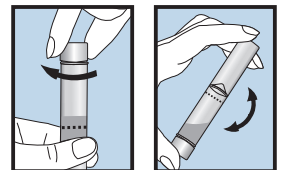
Insert saturated sponge in V-notch of funnel and wring saliva out against the inner wall of the V-notch. Saliva will flow into tube.



Repeat collection steps until the saliva reaches fill line.



Close lid tightly by firmly pushing down until you hear a loud click. Unscrew the funnel from the tube.



Close tube tightly with small cap. Shake for 5 seconds.

U.S. Patent No. 7,482,116;
 European Patent No. 1 513 952
 and 1 956 969; Patent pending
 Canadian Design Nos.
 127470; 132896; 132897
 U.S. D631,554 S and D640,795 S
 Community Design Nos.
 001095186-0001; -0002; -0003